



# Supporting a Cancer Journey

## *Brick by Brick*

*Honor • Inspire • Remember • Pay Tribute  
Celebrate • Reflect • Share the Spirit of Hope & Healing  
Acknowledge Your Commitment to Cancer*

Avita Health Foundation invites you to support our cancer program by creating a lasting legacy in memory or in honor of a loved one, a colleague, or someone who made a difference in your life.

The Healing & Memorial Gardens at Avita's Cancer Center and Avita Home Health & Hospice support patients and families throughout the year by offering a peaceful and tranquil place for meditation, to gather thoughts, and process information. A sanctuary for family and friends, these gardens provide a place to wait during patient therapies and treatments in a therapeutic landscape, as well as a place to memorialize loved ones.

When you purchase an engraved brick, paver, or garden bench, countless patients, visitors, and employees will have the opportunity to appreciate and find inspiration from all of the loving and meaningful messages as they visit the Healing & Memorial Gardens.

### *Double Your Impact*

#### **AVITA HEALTH FOUNDATION \$500K MATCH**

All commemorative bricks, pavers, and benches purchased in October during Cancer Awareness Month and November during Remembrance Month will be matched dollar-for-dollar up to \$500,000 by the Avita Health Foundation.

### **FAQs**

**Where will the engraved bricks/pavers be installed?** You have the choice to have your customized brick/paver installed in either of the Healing & Memorial Gardens at Avita's New Cancer Center in Ontario or at Avita Home Health & Hospice in Galion.

**What does my purchase of a brick/paver support?** The purchase of a customized brick/paver will help fund construction of the new cancer center and programs such as hospice & palliative care.

**What process is used to engrave my brick/paver and what happens if it gets damaged?** Laser engraving (clay) or sandblast engraving (limestone) is used on each brick. An endowment has been established to support the replacement of damaged bricks.

**Can I request a particular spot for my brick/paver or with other family members?** If ordered together, bricks/pavers can be placed in the same area. Unfortunately, we are unable to guarantee any positioning of bricks/pavers before installation. After installation, you will receive a map of the garden(s) to help you find your brick(s)/paver(s).

**Is my donation or purchase of a brick/paver tax-deductible?** Yes, all donations through the Avita Health Foundation are tax-deductible.

**For additional information, contact:**

**Chuck Cangelosi, Chief Development Officer**

269 Portland Way S, Galion, OH 44833  
419-468-0566 • ccangelosi@avitahs.org

**Catherine Sapp, MBA-HM, BSN, RN**

**Executive Director, Avita Home Health & Hospice**  
1200 N Market St, Galion, OH 44833 • 419-462-8051 • csapp@avitahs.org



## Engraved Options

Brick, Paver, and Bench Samples



### 4"x8" Brick

Up to 3 lines of text 20 characters per line

**\$250**

(up to 2 year pledge option available online)



### 8"x8" Brick

Up to 6 lines of text 20 characters per line

**\$1,000**

(up to 3 year pledge option available online)



### 12"x12" Limestone Paver

Up to 8 lines of text 14 characters per line

**\$2,500**

(online purchase only, pledge options available)

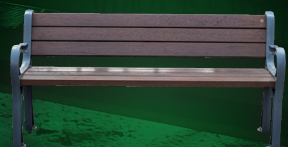


### 24"x24" Limestone Paver

Up to 12 lines of text 24 characters per line  
OR custom logo

**\$5,000**

(online purchase only, pledge options available)



### Bench Plate

Up to 6 lines of text 20 characters per line

**\$2,500**

(online purchase only, pledge options available)

Brick, paver, and bench samples shown may not depict actual colors.

To reserve a brick, please complete the attached form and send it to the Avita Health Foundation using the enclosed envelope.

Place one letter or space in each box as it is to appear on the brick. Blank spaces and punctuation count as spaces. Text will automatically be centered.

The Avita Health Foundation reserves the right to refuse any and all bricks or pavers.

Bricks, pavers, and benches can also be purchased (pledge arrangements made) online at **[avitahealth.org/foundation/brick-by-brick/](https://avitahealth.org/foundation/brick-by-brick/)** or by scanning the QR code.



**Step 1** ☐ 4"x8" Brick ☐ 8"x8" Brick

Please visit [avitahealth.org/foundation](https://avitahealth.org/foundation) to reserve a brick, paver, bench, or make pledge arrangements, if applicable.

Line 1 \_\_\_\_\_

Line 2 \_\_\_\_\_

Line 3 \_\_\_\_\_

Line 4 \_\_\_\_\_

Line 5 \_\_\_\_\_

Line 6 \_\_\_\_\_

Lines 4-6  
for 8"x8"  
bricks  
only

**Step 2** ☐ I'd like to charge my gift to the following credit card: ☐ AmEx ☐ Discover ☐ MasterCard ☐ VISA

Card Number \_\_\_\_\_ Exp. Date \_\_\_\_\_ CVV \_\_\_\_\_

☐ I've enclosed a check made payable to the **Avita Health Foundation**.

**Step 3** Name \_\_\_\_\_ Business Name \_\_\_\_\_

Address \_\_\_\_\_ City \_\_\_\_\_ State \_\_\_\_\_ Zip \_\_\_\_\_

Return form to: Avita Health Foundation  
269 Portland Way S, Galion, OH 44833